



ROVO STOFFE
FABRICS

ROVO
SETZT ENERGIEN FREI

ROVO STOFFE

FABRICS

PREISGRUPPE 1 FABRIC GROUP 1

BONDAI

Charakter: Feine Kreppoptik
 100% Polyester
 350 g/lfm Gewicht
 140 cm Breite
 150000 Scheuertouren
 (5 Jahre Garantie)
 6 Lichtechtheit
 4/5 Reibechtheit
 EN 1021-1/-2 Feuersicherung
 CRIB5, BS 7176 Medium Hazard

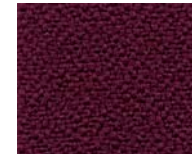
Character: Fine crepe weave
 100% Polyester
 350 g/lfm weight per meter
 140 cm width
 150000 rubs (Martindale),
 (5 years warranty)
 6 light fastness
 4/5 fastness to rubbing
 EN 1021-1/-2 flammability
 CRIB5, BS 7176 medium hazard



0-44 orange



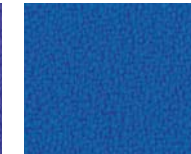
0-43 rot



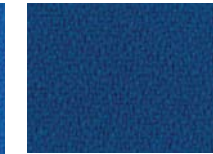
0-40 weinrot



0-45 lila



0-48 ocean



0-49 dunkelblau



0-50 royalblau



0-38 blau



0-47 grasgrün



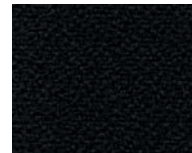
0-46 grün



0-42 beige



0-41 grau



0-39 schwarz

QUADRINO

Charakter: Moderne, zeitlose
 kleine Quadratbindung
 100% Polyolefin FR
 350 g/lfm Gewicht
 140 cm Breite
 50000 Scheuertouren
 EN 14465: Grade A
 (5 Jahre Garantie)
 6 Lichtechtheit
 4 (trocken), 4 (nass) Reibechtheit
 DIN 4102/B1, EN 1021-1/-2,
 NF-P-92-503 M1 BS 7176
 Medium Hazard,
 BS 5852-4 Ignition,
 Feuersicherung
 schwer entflammbar

Character: Contemporary fabric
 with discrete check structure
 100% Polyolefin FR
 350 g/lfm weight per meter
 140 cm width
 50000 rubs, EN 14465: Grade A
 (Martindale), (5 years warranty)
 6 light fastness
 4 (dry), 4 (wet) fastness to
 rubbing
 DIN 4102/B1, EN 1021-1/-2,
 NF-P-92-503 M1 BS 7176
 Medium Hazard, BS 5852-4
 Ignition, flammability,
 flame retardant



1-88 lachs



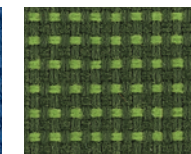
1-89 rot



1-90 hellblau



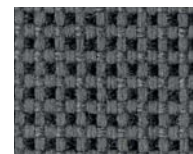
1-91 blau



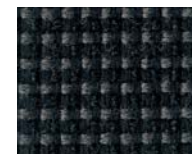
1-98 kiwi



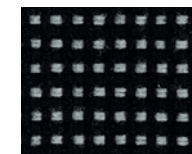
1-93 beige



1-94 umbragrau



1-95 schwarz



1-99 black & white



1-83 rot uni



1-87 schwarz uni

PREISGRUPPE 1 FABRIC GROUP 1

SUPERO*

Charakter: Feine Kreppoptik
100% Xtreme (Polyester)
Stretch, 400 g/lfm Gewicht
140 cm Breite
100000 Scheuertouren
(5 Jahre Garantie)
6 Lichtechtheit,
4 (trocken), 4 (nass) Reibechtheit
EN 1021-1/-2 Feuersicherung
* Supero ist als Preisgruppe 3
in diesen und weiteren Farben
in „schwer entflammbarer“
Qualität (M1/B1) lieferbar
(=Trevira CS)

Character: Fine crepe weave
100% Xtreme (Polyester)
Stretch,
400 g/lfm weight per meter
140 cm width
100000 rubs (Martindale),
(5 years warranty)
6 light fastness
4 (dry), 4 (wet) fastness to
rubbing
EN 1021-1/-2 flammability
* Supero is available in price
group 3 in these and further
colors in low-flammability
quality (M1/B1) (=Trevira CS)



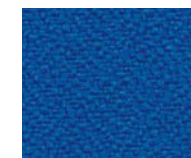
1-05 lobster



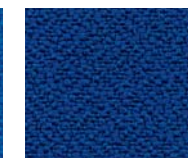
1-06 rot



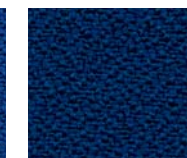
1-74 aubergine



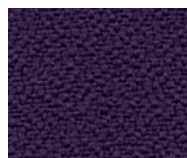
1-72 royalblau



1-07 ocean



1-73 dunkelblau



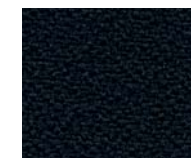
1-82 violett



1-81 grau



1-75 anthrazit

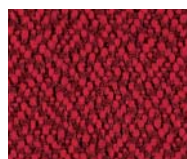


1-76 schwarz

SUPERO PLUS

Charakter: Feine Kreppoptik
100% Polyester - Trevira CS
420 g/lfm Gewicht,
140 cm Breite
100000 Scheuertouren
(5 Jahre Garantie)
6 Lichtechtheit
4/5 Reibechtheit EN 1021-1/-2
Feuersicherung C1, B1, M1,
CRIB 5, IMO A 652 (16)

Character: Fine crepe weave
100% Polyester - Trevira CS
420 g/lfm weight per meter,
140 cm width
100000 rubs (Martindale),
(5 years warranty)
6 light fastness
4/5 fastness to rubbing
EN 1021-1/-2 flammability
C1, B1, M1, CRIB 5,
IMO A 652 (16)



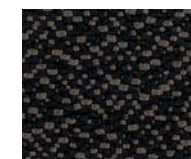
1-77 rot-melange



1-78 blau-melange



1-79 grau-melange



1-80 schwarzbraun-melange



1-31 nachtblau



1-09 schwarz



1-30 rot-kariert

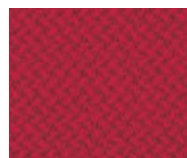


1-28 anthrazit-kariert

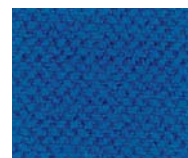
ERA

Charakter:
100% Polyester
320 g/lfm Gewicht
140 cm Breite
100000 Scheuertouren
(10 Jahre Garantie)
5 Lichtechtheit,
4 (trocken), 4 (nass) Reibechtheit
EN 1021-1/-2 Feuersicherung
BS 7176 Low Hazard

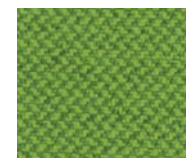
Character:
100% Polyester
320 g/lfm weight per meter
140 cm width
100000 rubs (Martindale),
(10 years warranty)
5 light fastness
4 (dry), 4 (wet) fastness to
rubbing
EN 1021-1/-2 flammability
BS 7176 Low Hazard



1-24 rot



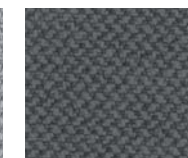
1-26 blau



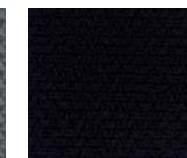
1-22 grün



1-27 grau



1-19 anthrazit



1-18 schwarz

ROVO STOFFE FABRICS PREISGRUPPE 2 FABRIC GROUP 2

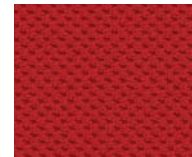
ATLANTICO

Charakter: Top moderne, leicht strukturierte Optik
 100% Polyester
 530 g/lfm Gewicht, 150 cm Breite
 110000 Scheuertouren (10 Jahre Garantie), 5 Lichtechtheit
 4-5 (trocken), 4-5 (nass)
 Reibechtheit
 EN 1021-1/-2 Feuersicherung

Character: Exciting contemporary fabric with textured surface
 100% Polyester
 530 g/lfm weights per meter, 150 cm width 110000 rubs (Martindale), (10 years warranty), 5 light fastness
 4-5 (dry), 4-5 (wet) fastness to rubbing
 EN 1021-1/-2 flammability



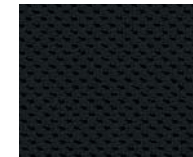
2-00 lachsrot



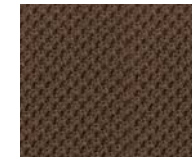
2-01 rot



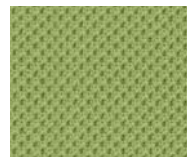
2-03 anthrazit



2-04 schwarz



2-05 braun



2-06 kiwi



2-07 violett



2-08 gletscher

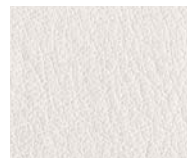


2-11 blau

PRONTO

Charakter: Kunstleder mit leichten Mastfalten
 88% PVC, 12% PES/BW-Gewirke, 680 g/m² Gewicht, 140 cm Breite
 - pflegeleicht - angenehm weich
 - guter Griff - dehnfähig
 - abriebfest - reißfest
 - Urin- und Blutbeständig
 - Desinfektionsmittelbeständig

Character: Imitation leather with light wrinkles
 88% PVC, 12% PES/BW-fabrics, 680 g/m² weight, 140 cm width
 - easy to clean - soft supple - good touch - elastic - abrasion resistant - tear resistant - urine and blood resistant - resistant to disinfections



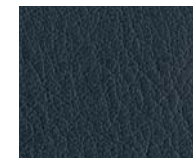
2-45 weiß



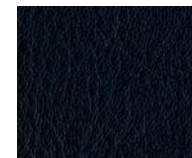
2-46 rot



2-47 blau



2-48 grau



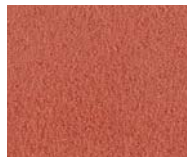
2-49 schwarz

nicht für alle Modelle lieferbar
 not available for all models

MICRO

Charakter: Weicher Griff, feine Optik
 Komfort-Microfaser
 100% Polyester
 370 g/lfm Gewicht
 150 cm Breite
 30000 Scheuertouren
 4 Lichtechtheit
 4 (trocken), 4 (nass)
 Reibechtheit
 EN 1021 Feuersicherung

Character: Exciting contemporary fabric
 Comfort-Microfiber
 100% Polyester
 370 g/lfm weight per meter
 150 cm width
 30000 rubs (Marindale)
 4 light fastness
 4 (dry), 4 (wet) fastness to rubbing
 EN 1021 flammability



2-16 terra



2-17 rosso



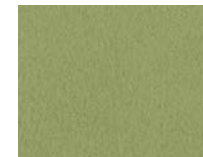
2-18 blu



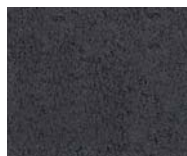
2-23 violett



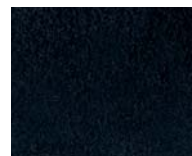
2-21 braun



2-25 verde



2-19 grigio



2-28 nero

PREISGRUPPE 3 FABRIC GROUP 3

FAME

Charakter: Feine, leicht quadratische Wollstruktur
95% NZ-Wolle, 5% Polyamid
610 g/lfm Gewicht,
140 cm Breite
200000 Scheuertouren
(10 Jahre Garantie)
5 Lichtechtheit,
4-5 (trocken), 4-5 (nass)
Reibechtheit
EN 1021-1/-2 Feuersicherung

Character: Wool fabric woven with simple and discrete structure
95% NZ-wool, 5% Polyamid
610 g/lfm weight per meter,
140 cm width
200000 rubs (Martindale),
(10 years warranty)
5 light fastness,
4-5 (dry), 4-5 (wet) fastness to rubbing
EN 1021-1/-2 flammability



WOOLS
OF
NEW ZEALAND™



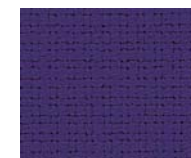
3-65 mandarin



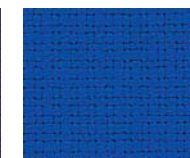
3-60 rot



3-66 aubergine



3-67 lila



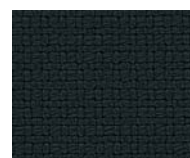
3-61 blau



3-62 dunkelblau



3-63 anthrazit



3-64 schwarz

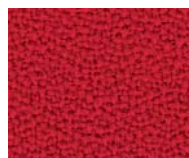
GAYA

Charakter: Feines Wollkrepp
100% Kammgarnwolle
520 g/lfm Gewicht, 140 cm Breite
50000 Scheuertouren (5 Jahre Garantie), 5 Lichtechtheit
4-5 (trocken), 4-5 (nass)
Reibechtheit
EN 1021-1/-2 Feuersicherung
DIN 4102 B2, BS 5852, NF-P-92503 M2

Character: Fine wool crepe weave
100% worsted wool
520 g/lfm weight per meter,
140 cm width
50000 rubs (Martindale),
(5 years warranty),
5 light fastness, 4-5 (dry), 4-5 (wet) fastness to rubbing
EN 1021-1/-2 flammability
DIN 4102 B2, BS 5852, NF-P-92503 M2



WOOLS
OF
NEW ZEALAND™



3-80 rot



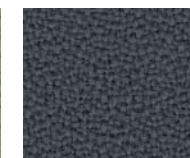
3-85 marineblau



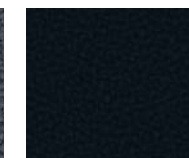
3-87 dunkelblau



3-95 apfelgrün



3-89 grau



3-88 schwarz

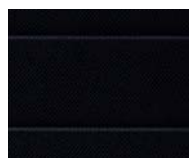
ATLANTICO WELDED

Charakter: Top moderne, leicht strukturierte Optik mit Schaumpolster PU
100% Polyester
771 g/lfm Gewicht, 138 cm Breite
110000 Scheuertouren (10 Jahre Garantie), 5 Lichtechtheit
4-5 (trocken), 4-5 (nass)
Reibechtheit
EN 1021-1/-2 Feuersicherung

Character: Exciting contemporary fabric with textured surface with foam upholstery PU
100% Polyester
771 g/lfm weights per meter,
138 cm width, 110000 rubs (Martindale), (10 years warranty),
5 light fastness
4-5 (dry), 4-5 (wet) fastness to rubbing
EN 1021-1/-2 flammability



3-41 rot

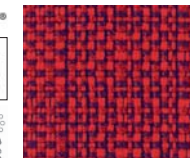


3-40 schwarz

CLIMATEX

Charakter: Feine, leicht quadratische Wollstruktur
68% Cradura™, 18% zertifizierte Farmwolle, 14% Redesign Lenzing FR™
543 g/lfm Gewicht,
140 cm Breite
>100000 Scheuertouren
6 Lichtechtheit
4-5 (trocken), 4-5 (nass)
EN 1021-1/-2 Feuersicherung
BS 5852

Character: Wool fabric woven with simple and discrete structure
68% Cradura™, 18% zertifizierte Farmwolle, 14% Redesign Lenzing FR™
543 g/lfm weights per meter,
140 cm width,
>100000 rubs (Martindale),
6 light fastness
4-5 (dry), 4-5 (wet)
EN 1021-1/-2 flammability
BS 5852



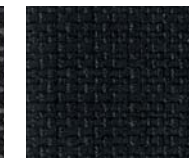
3-31 rot meliert



3-33 grau meliert



3-32 schwarz/grau meliert



3-34 schwarz

nur lieferbar für Rückenpolster
der Modelle R12 und R16
only available for backside
series R12 and R16

ROVO STOFFE

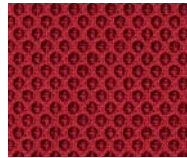
FABRICS

PREISGRUPPE 3 FABRIC GROUP 3

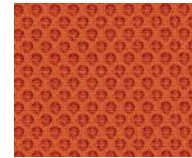
RUNNER

Charakter: Netzgewebe, High Tech Faser, atmungsaktiv und elastisch, 100% Polyester, 510 g/lfm Gewicht, 160 cm Breite, 70000 Scheuertouren (10 Jahre Garantie) Martindale, 5 Lichtechtheit, 4-5 Reibechtheit, EN 1021-1/-2 Feuersicherung

Charakter: Meshware High Tech fiber, breathable and elastic, 100% Polyester, 510 g/lfm weight per meter, 160 cm width, 70000 rubs (Martindale), (10 years warranty), 5 light fastness, 4-5 fastness to rubbing, EN 1021-1/-2 flammability



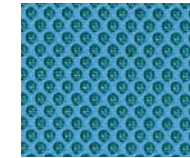
3-12 Rot



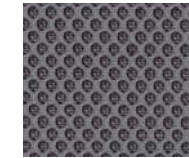
3-13 orange



3-14 kiwi



3-15 gletscher



3-11 grau



3-17 anthrazit



3-16 weiß



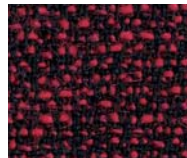
3-10 schwarz

PREISGRUPPE 4 FABRIC GROUP 4

EXTREMO

Charakter: Äußerst strapazierfähiges, meliertes Krepp für 24-h Einsatz, 50% Polyamid, 33% Schurwolle, 10% Visil, 7% Viskose, 610 g/lfm Gewicht, 140 cm Breite, 500000 Scheuertouren (10 Jahre Garantie) 6 Lichtechtheit, 4 (trocken), 4 (nass) Reibechtheit EN 1021-1/-2 Feuersicherung BS 7176 Medium Hazard, BS 5852schwer entflammbar

Charakter: Very strong crepe weave for 24-h use, 50% Polyamid, 33% virgin wool, 10% Visil, 7% Viskose, 610 g/lfm weight per meter, 140 cm width, 500000 rubs (Martindale), (10 years warranty) 6 light fastness, 4 (dry), 4 (wet) fastness to rubbing EN 1021-1/-2 flammability BS 7176 Medium Hazard, BS 5852 fire retardant



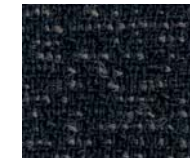
4-70 rot



4-71 multi



4-72 blau



4-73 schwarz

PREISGRUPPE 5 FABRIC GROUP 5

COMFORT

Charakter: Besonders hochwertige, elegante Komfort-Microfaser 88% Polyester, 12% Polyurethan
385 g/lfm Gewicht, 140 cm Breite
100000 Scheuertouren (10 Jahre Garantie)
5 Lichtechtheit
4-5 (trocken), 4-5 (nass) Reibechtheit
EN 1021-1 Feuersicherung
BS 5852 P.1

Character: Very comfortable micro fiber fabric
88% Polyester, 12% Polyurethan
385 g/lfm weight per meter, 140 cm width
100000 rubs (Martindale), (10 years warranty)
5 light fastness
4-5 (dry), 4-5 (wet), fastness to rubbing
EN 1021-1 flammability
BS 5852 P.1



In weiteren
100 Farben lieferbar.
In further
100 colors available.

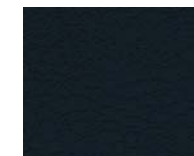


5-90 schwarz

SONDERLEDER SPECIAL LEATHER

Nappaleder pigmentiert für Modellreihen XP, XL

Black pigmented Nappa leather for models XP, XL



5-04 schwarz

SEMIANILIN-LEDER SEMIANILIN LEATHER

Feines Nappaleder pigmentiert. Weitere Lederfarben auf Anfrage.

Pigmented Nappa leather. Further colors upon request.



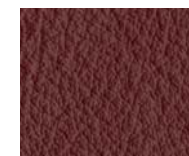
5-00 rubinrot



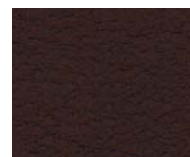
5-60 aubergine



5-61 blau



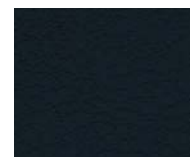
5-03 cognac



5-63 braun



5-02 grau



5-64 schwarz



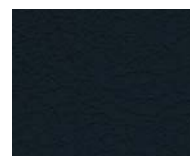
5-68 weiß

PREISGRUPPE 7 FABRIC GROUP 7

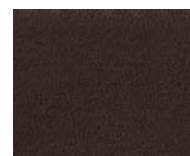
PREMIUM LEADER PREMIUM LEATHER

Feinstes Nappaleder, naturbelassen, besonders weicher Griff, atmungsaktiv, ohne chemische Lösungsmittel. Für Modelle XZ. (Weitere Modelle auf Anfrage)

Finest Nappa Premium-leather, natural, soft touch, breathable, without any chemical solvents. For models XZ. (Further models upon request)



7-03 schwarz



7-05 mittelbraun



7-06 schwarz gelocht

ROVO

SETZT ENERGIEN FREI



Völkle Bürostühle GmbH
Hohenholz 1 · 72290 Loßburg
Phone +49 (0) 74 46/182-0
Fax +49 (0) 74 46/182-160
Germany
www.rovo.de